



Day-Date 36

Oyster, 36 mm, white gold

**The Oyster Perpetual
Day-Date 36 in 18 ct
white gold with a blue
ombré dial, fluted bezel
and a President
bracelet.**



FLUTED BEZEL

A Rolex signature

The Rolex fluted bezel is a mark of distinction. Originally, the fluting of the Oyster bezel had a functional purpose: it served to screw the bezel onto the case helping to ensure the waterproofness of the watch.

It was therefore identical to the fluting on the case back, which was also screwed onto the case for waterproofness, using specific Rolex tools. Over time, the fluting became an aesthetic element, a genuine Rolex signature feature. Today the fluted

bezel is a mark of distinction, in gold on this Day-
Date 36.



BLUE OMBRÉ DIAL

Continuity of a design

The ombré dial features a coloured surface at the centre, progresses to a deep black around the edge. This dial represents the continuity of a design that Rolex introduced in the 1980s and relaunched in 2019.

The manufacture of these dials with a concentric gradient involves the application of black lacquer, a delicate operation overseen by a specialist whose task it is to ensure the harmonious transition from colour to darkness.



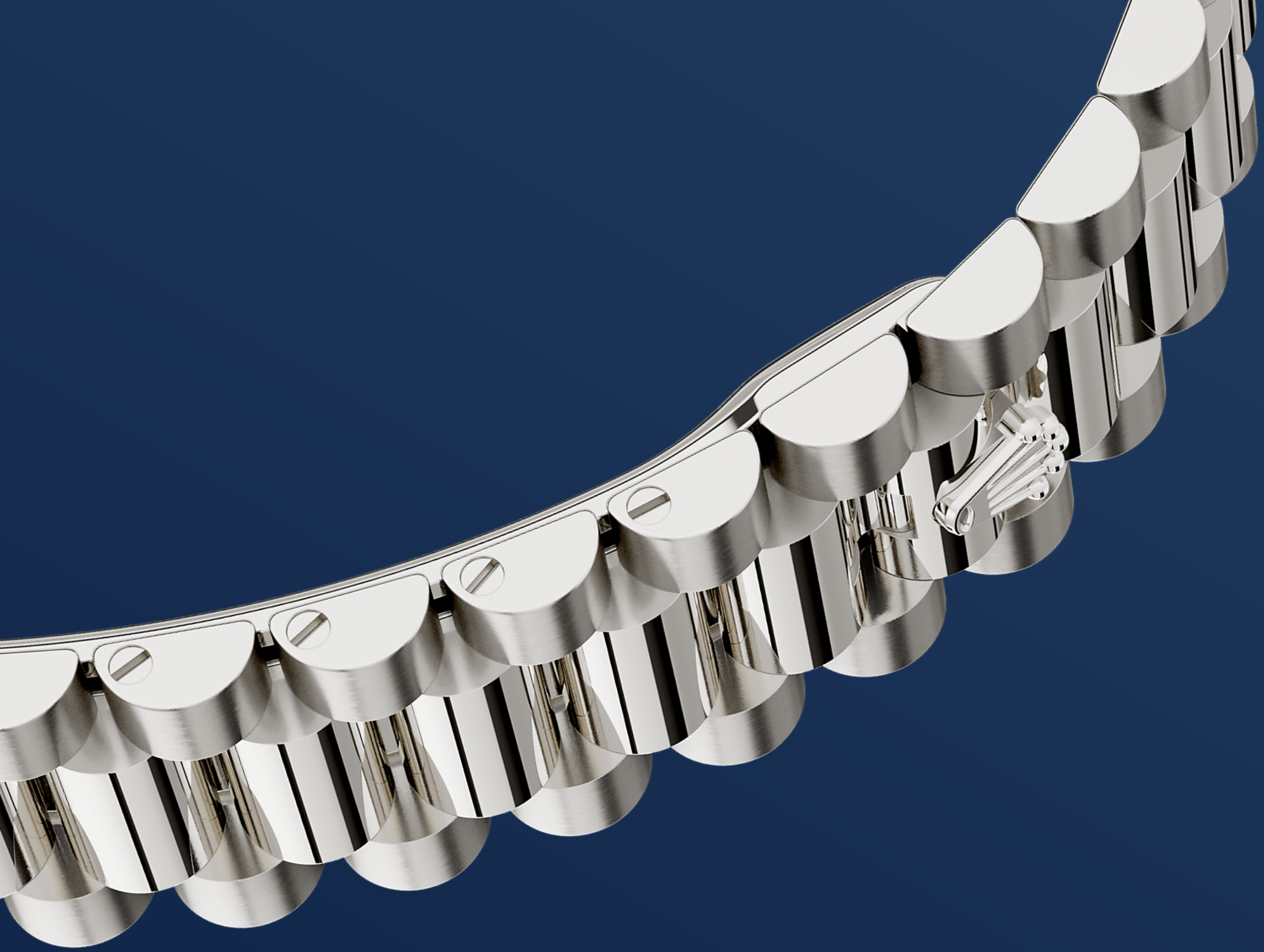
18 CT WHITE GOLD

Commitment to excellence

By operating its own exclusive foundry, Rolex has the unrivalled ability to cast the highest quality 18 ct gold alloys. According to the proportion of silver, copper, platinum or palladium added, different types of 18 ct gold are obtained: yellow, pink or white.

They are made with only the purest metals and meticulously inspected in an in-house laboratory with state-of-the-art equipment, before the gold is

formed and shaped with the same painstaking attention to quality. Rolex's commitment to excellence begins at the source.



THE PRESIDENT BRACELET

The ultimate refinement

The design, development and production of Rolex bracelets and clasps, as well as the stringent tests they face, involve advanced high technology.

And, as with all the components of the watch, aesthetic controls by the human eye guarantee impeccable beauty. The President bracelet, with its semi-circular three piece links, was created in 1956 for the launch of the Oyster Perpetual Day-Date. It represents the ultimate in refinement and comfort and is always made of carefully selected precious metals.

More Day-Date

technical details

Reference 128239

Model Case

Type

Oyster, 36 mm, white gold

Diameter

36 mm

Material

White gold

Bezel

Fluted

Oyster Architecture

Monobloc middle case, screw-down case back and winding crown

Winding Crown

Screw-down, Twinlock double waterproofness system

Crystal

Scratch-resistant sapphire, Cyclops lens over the date

Water Resistance

Waterproof to 100 metres / 330 feet

Movement

Type

Perpetual, mechanical, self-winding

Calibre

3255, Manufacture Rolex

Precision

-2/+2 sec/day, after casing

Oscillator

Paramagnetic blue Parachrom hairspring. High-performance Paraflex shock absorbers

Winding

Bidirectional self-winding via Perpetual rotor

Power reserve

Approximately 70 hours

Functions

Centre hour, minute and seconds hands. Instantaneous day and date in apertures, secure rapid-setting. Stop-seconds for exact time setting

Bracelet

Type

President, semi-circular three-piece links

Bracelet Material

18 ct white gold

Clasp

Concealed folding Crownclasp

Dial

Type

Blue ombré

Certification

Type

Superlative Chronometer (COSC + Rolex certification after casing)

Explore and discover more on Rolex.com

All intellectual property rights such as trademarks, service marks, trade names, designs and copyrights are reserved.

Nothing contained in this website may be reproduced without written permission. Rolex reserves the right at all times to modify the models featured in the present website.

