



# GMT-Master II

Oyster, 40 mm, Oystersteel

**The Oyster Perpetual  
GMT-Master II in  
Oystersteel with a black  
dial and an Oyster  
bracelet.**



24-HOUR ROTATABLE BEZEL

## Innovative high- technology

This model features a black dial and a two-colour Cerachrom bezel insert in green and black ceramic. In addition to conventional hour, minute and seconds hands, the GMT-Master II features an arrow-tipped hand, which circles the dial once every 24 hours, as well as a bidirectional rotatable 24-hour graduated bezel.

The distinctively coloured 24-hour hand displays the “home” reference time in a first time zone

which can be read on the graduations on the bezel. The traveller's local time is easily set by "jumping" from hour to hour, thanks to an ingenious mechanism operated via the winding crown: the hour hand can be adjusted forwards or backwards independently of the minute and seconds hands. This allows travellers to adapt to their new time zone without affecting the precision of their timekeeping. The Cerachrom bezel insert features an original colour combination: black and an exclusive green that is reserved for this model.



BLACK DIAL

## High legibility in all circumstances

Like all Rolex Professional watches, the GMT-Master II offers exceptional legibility in all circumstances, and especially in the dark, thanks to its Chromalight display. The broad hands and hour markers in simple shapes – triangles, circles, rectangles – are filled with a luminescent material emitting a long-lasting glow.

On this novel version of the watch, the crown and crown guard are on the left side of the watch case.

The date aperture and the Cyclops lens are at 9 o'clock.

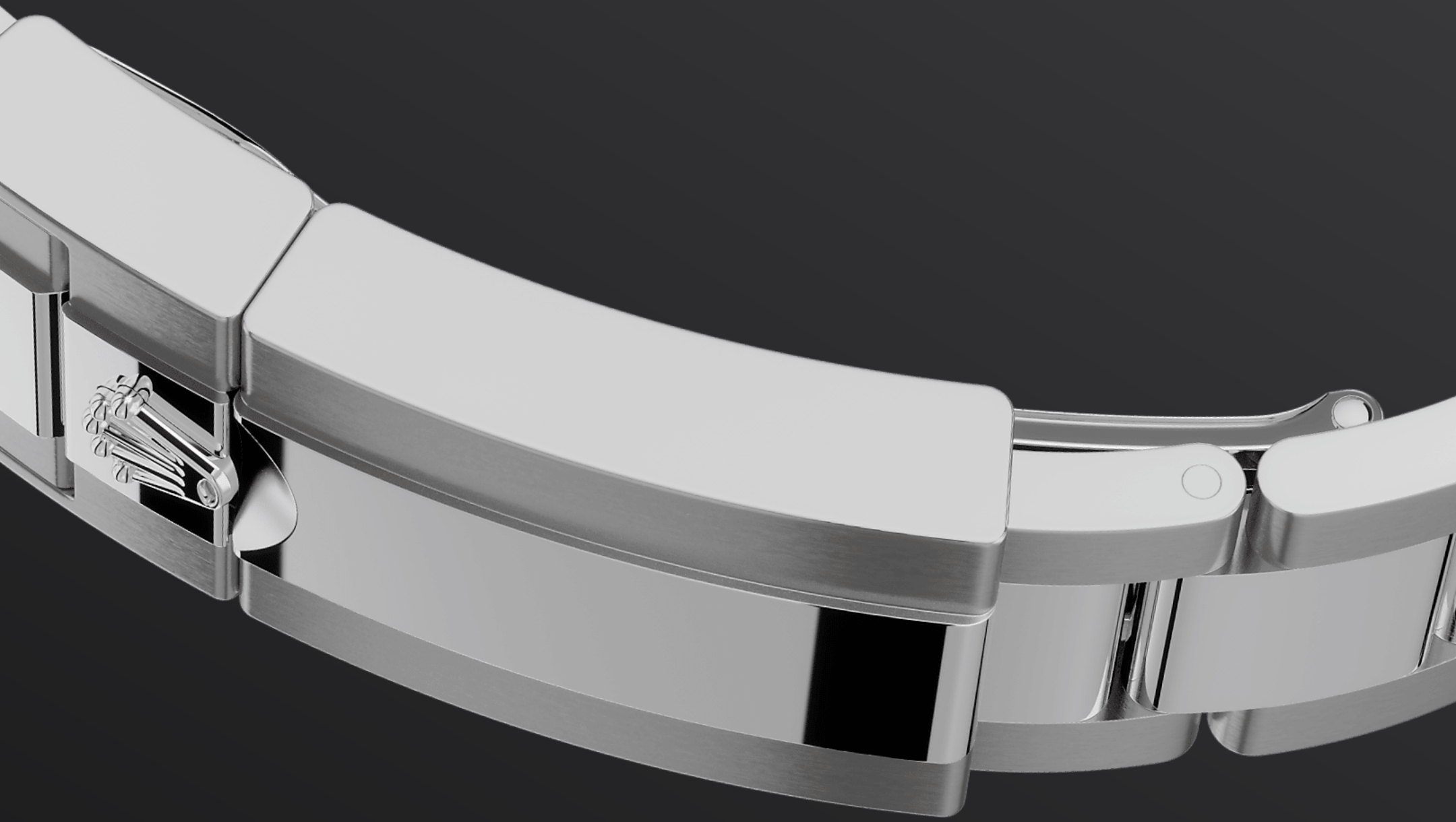


OYSTERSTEEL

## Highly resistant to corrosion

Rolex uses Oystersteel for its steel watch cases. Specially developed by the brand, Oystersteel belongs to the 904L steel family, alloys most commonly used in high-technology and in the aerospace and chemical industries, where maximum resistance to corrosion is essential.

Oystersteel is extremely resistant, offers an exceptional finish once polished and maintains its beauty even in the harshest environments.



THE OYSTER BRACELET

## Alchemy of form and function

The Oyster bracelet is a perfect alchemy of form and function, aesthetics and technology, designed to be both robust and comfortable. It is equipped with an Oysterlock folding clasp, which prevents accidental opening and the Easylink comfort extension link, also exclusive to Rolex.

This ingenious system allows the wearer to increase the bracelet length by approximately 5



mm, providing additional comfort in any circumstance.

# More GMT-Master II

## technical details

Reference 126720VTNR

### Model Case

---

#### Type

Oyster, 40 mm, Oystersteel

#### Diameter

40 mm

#### Material

Oystersteel

#### Bezel

Bidirectional rotatable 24-hour graduated bezel. Two-colour green and black Cerachrom insert in ceramic, moulded numerals and graduations

#### Oyster Architecture

Monobloc middle case, screw-down case back and winding crown

#### Winding Crown

Screw-down, Triplock triple waterproofness system

#### Crystal

Scratch-resistant sapphire, Cyclops lens over the date

#### Water Resistance

Waterproof to 100 metres / 330 feet

### Movement

---

#### Type

Perpetual, mechanical, self-winding, GMT function

#### Calibre

3285, Manufacture Rolex

#### Precision

-2/+2 sec/day, after casing

#### Oscillator

Paramagnetic blue Parachrom hairspring. High-performance Paraflex shock absorbers

### **Winding**

Bidirectional self-winding via Perpetual rotor

### **Power reserve**

Approximately 70 hours

### **Functions**

Centre hour, minute and seconds hands. 24-hour display. Second time zone with independent rapid-setting of the hour hand.

Instantaneous date. Stop-seconds for precise time setting

## **Bracelet**

---

### **Type**

Oyster, three-piece solid links

### **Bracelet Material**

Oystersteel

### **Clasp**

Folding Oysterlock safety clasp with Easylink 5 mm comfort extension link

## **Dial**

---

### **Type**

Black

### **Details**

Highly legible Chromalight display with long-lasting blue luminescence

## **Certification**

---

### **Type**

Superlative Chronometer (COSC + Rolex certification after casing)

# Explore and discover more on Rolex.com

**All intellectual property rights such as trademarks, service marks, trade names, designs and copyrights are reserved.**

Nothing contained in this website may be reproduced without written permission. Rolex reserves the right at all times to modify the models featured in the present website.

