



# GMT-Master II

Oyster, 40 mm, Oystersteel and yellow gold

**The Oyster Perpetual  
GMT-Master II in  
Oystersteel and yellow  
gold with a black dial  
and a Jubilee bracelet.**



24-HOUR ROTATABLE BEZEL

## Innovative high- technology

This model features a black dial and a two-colour Cerachrom bezel insert in grey and black ceramic. In addition to conventional hour, minute and seconds hands, the GMT-Master II features an arrow-tipped hand, which circles the dial once every 24 hours, as well as a bidirectional rotatable 24-hour graduated bezel.

The distinctively coloured 24-hour hand displays the “home” reference time in a first time zone

which can be read on the graduations on the bezel. The traveller's local time is easily set by "jumping" from hour to hour, thanks to an ingenious mechanism operated via the winding crown: the hour hand can be adjusted forwards or backwards independently of the minute and seconds hands. This allows travellers to adapt to their new time zone without affecting the precision of their timekeeping.



BLACK DIAL

## High legibility in all circumstances

Like all Rolex Professional watches, the GMT-Master II offers exceptional legibility in all circumstances, and especially in the dark, thanks to its Chromalight display.

The broad hands and hour markers in simple shapes – triangles, circles, rectangles – are filled with a luminescent material emitting a long-lasting glow.

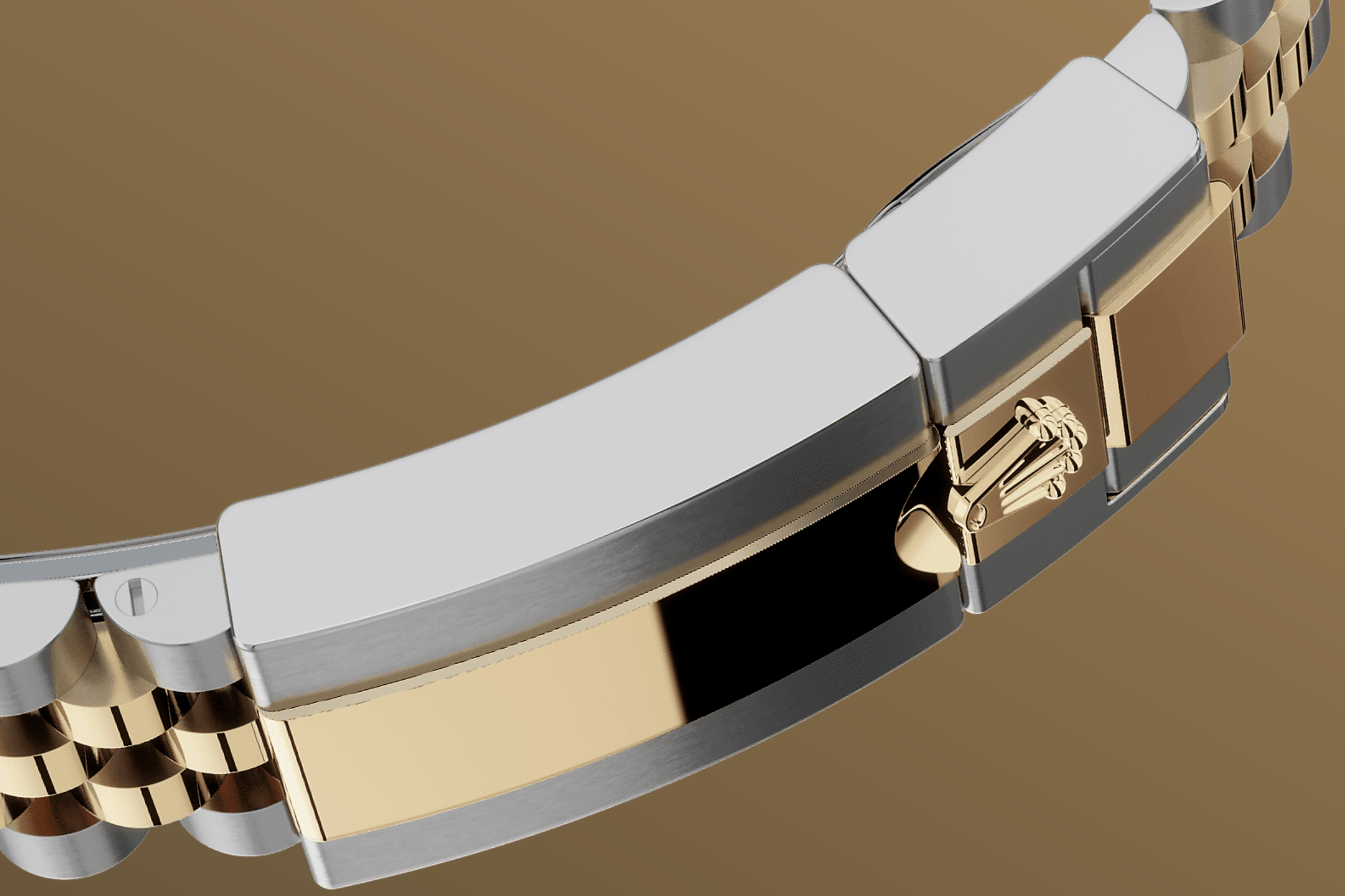


YELLOW ROLESOR

## A meeting of two metals

Gold is coveted for its lustre and nobility. Steel reinforces strength and reliability. Together, they harmoniously combine the best of their properties.

A true Rolex signature, Rolesor has featured on Rolex models since the early 1930s, and was trademarked as a name in 1933. It is one of the prominent pillars of the Oyster collection.



THE JUBILEE BRACELET

## Supple and comfortable

This version of the GMT-Master II is fitted with a Jubilee bracelet. Supple and comfortable, the five-piece link Jubilee bracelet was specially created for the launch of the Oyster Perpetual Datejust model in 1945.

The Jubilee bracelet on this model is equipped with a Rolex-designed, patented Oysterlock folding safety clasp, which prevents accidental opening. It also features the Easylink comfort extension link, developed by the brand, which allows the bracelet length to be increased by

approximately 5 mm. A concealed attachment system ensures seamless visual continuity between the bracelet and case.



# More GMT-Master II

## technical details

Reference 126713GRNR

### Model Case

---

#### Type

Oyster, 40 mm, Oystersteel and yellow gold

#### Diameter

40 mm

#### Material

Yellow Rolesor

#### Bezel

Bidirectional rotatable 24-hour graduated bezel. Two-colour grey and black Cerachrom insert in ceramic, moulded numerals and graduations

#### Oyster Architecture

Monobloc middle case, screw-down case back and winding crown

#### Winding Crown

Screw-down, Triplock triple waterproofness system

#### Crystal

Scratch-resistant sapphire

#### Water Resistance

Waterproof to 100 metres / 330 feet

### Movement

---

#### Type

Perpetual, mechanical, self-winding, GMT function

#### Calibre

3285, Manufacture Rolex

#### Precision

-2/+2 sec/day, after casing

#### Oscillator

Paramagnetic blue Parachrom hairspring. High-performance Paraflex shock absorbers

### **Winding**

Bidirectional self-winding via Perpetual rotor

### **Power reserve**

Approximately 70 hours

### **Functions**

Centre hour, minute and seconds hands. 24-hour display. Second time zone with independent rapid-setting of the hour hand.

Instantaneous date. Stop-seconds for precise time setting

## **Bracelet**

---

### **Type**

Jubilee, five-piece links

### **Bracelet Material**

Yellow Rolesor - combination of Oystersteel and yellow gold

### **Clasp**

Folding Oysterlock safety clasp with Easylink 5 mm comfort extension link

## **Dial**

---

### **Type**

Black

### **Details**

Highly legible Chromalight display with long-lasting blue luminescence

## **Certification**

---

### **Type**

Superlative Chronometer (COSC + Rolex certification after casing)

# Explore and discover more on Rolex.com

**All intellectual property rights such as trademarks, service marks, trade names, designs and copyrights are reserved.**

Nothing contained in this website may be reproduced without written permission. Rolex reserves the right at all times to modify the models featured in the present website.

