



Submariner Date

Oyster, 41 mm, Oystersteel

**The Oyster Perpetual
Submariner Date in
Oystersteel with a
Cerachrom bezel insert
in black ceramic and a
black dial with large
luminescent hour
markers.**



UNIDIRECTIONAL ROTATABLE BEZEL

An underwater tool

The Submariner's rotatable bezel is a key functionality of the watch. Its 60-minute graduations allow a diver to accurately and safely monitor diving time and decompression stops.

Manufactured by Rolex from a hard, corrosion-resistant ceramic, the Cerachrom bezel insert is virtually scratchproof. A luminescent capsule on the zero marker ensures legibility, no matter how dark the environment. The bezel's knurled edge is carefully designed to offer excellent grip under water, even with gloves.



BLACK DIAL

For legibility underwater

The dial's luminescent Chromalight display is an innovation that improved visibility in dark environments, an essential feature for divers.

Hour markers in simple shapes – triangles, circles, rectangles – and broad hour and minute hands enable instant and reliable reading to prevent any risk of confusion underwater.

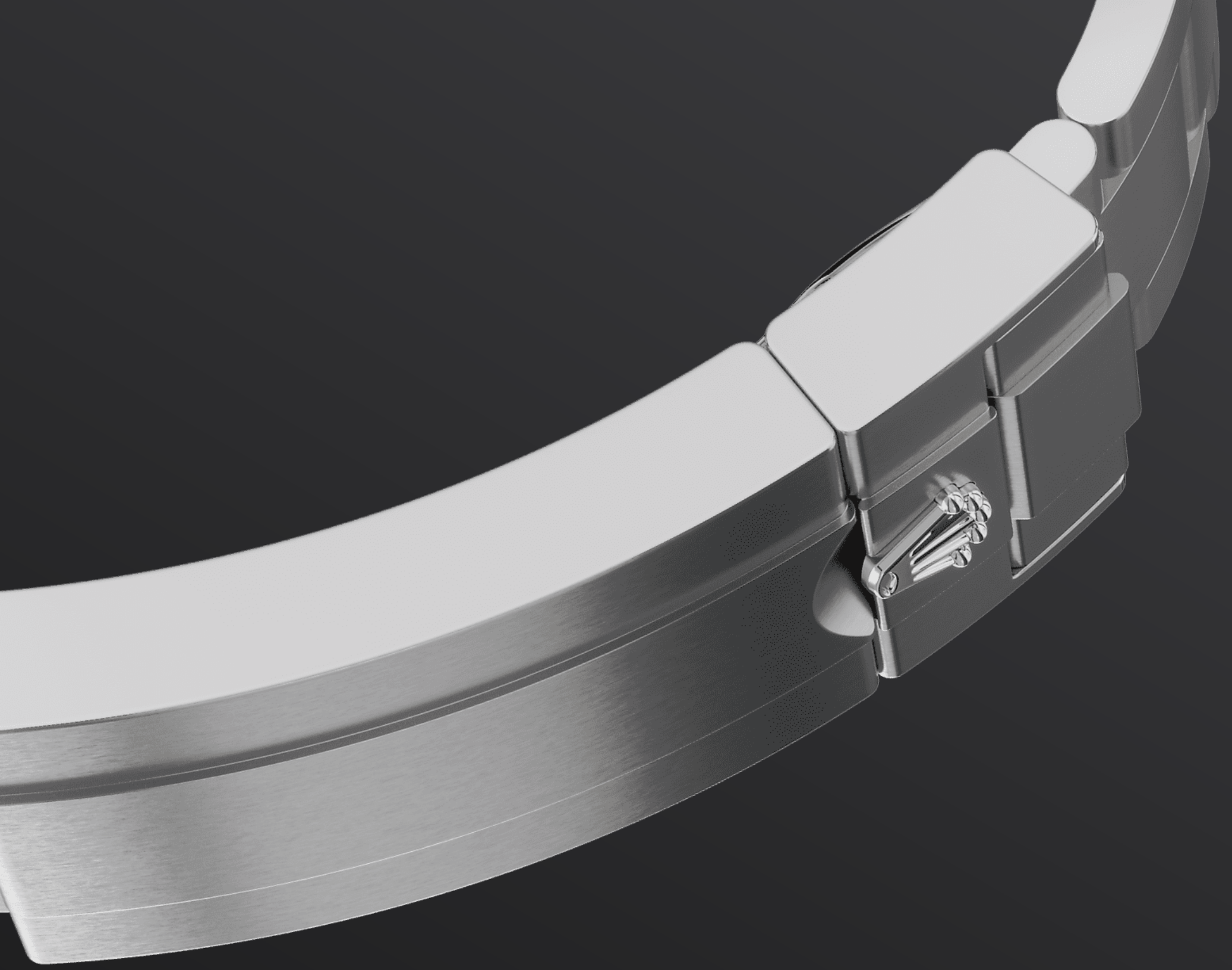


OYSTERSTEEL

Highly resistant to corrosion

Rolex uses Oystersteel for its steel watch cases. Specially developed by the brand, Oystersteel belongs to the 904L steel family, alloys most commonly used in high-technology and in the aerospace and chemical industries, where maximum resistance to corrosion is essential.

Oystersteel is extremely resistant, offers an exceptional finish once polished and maintains its beauty even in the harshest environments.



THE OYSTER BRACELET

Alchemy of form and function

The Oyster bracelet is a perfect alchemy of form and function, aesthetics and technology, designed to be both robust and comfortable.

It is equipped with an Oysterlock clasp, which prevents accidental opening, and an ingenious Glidelock, allowing fine adjustments of the bracelet without using any tools — and allowing it to be worn comfortably over a diving suit.

More Submariner

technical details

Reference 126610LN

Model Case

Type

Oyster, 41 mm, Oystersteel

Diameter

41 mm

Material

Oystersteel

Bezel

Unidirectional rotatable 60-minute graduated, scratch-resistant Cerachrom insert in black ceramic, numerals and graduations coated in platinum

Oyster Architecture

Monobloc middle case, screw-down case back and winding crown

Winding Crown

Screw-down, Triplock triple waterproofness system

Crystal

Scratch-resistant sapphire, Cyclops lens over the date

Water Resistance

Waterproof to 300 metres / 1,000 feet

Movement

Type

Perpetual, mechanical, self-winding

Calibre

3235, Manufacture Rolex

Precision

-2/+2 sec/day, after casing

Oscillator

Paramagnetic blue Parachrom hairspring. High-performance Paraflex shock absorbers

Winding

Bidirectional self-winding via Perpetual rotor

Power reserve

Approximately 70 hours

Functions

Centre hour, minute and seconds hands. Instantaneous date with rapid setting. Stop-seconds for precise time setting

Bracelet

Type

Oyster, three-piece solid links

Clasp

Folding Oysterlock safety clasp with Rolex Glidelock extension system

Bracelet Material

Oystersteel

Dial

Type

Black

Details

Highly legible Chromalight display with long-lasting blue luminescence

Certification

Type

Superlative Chronometer (COSC + Rolex certification after casing)

Explore and discover more on Rolex.com

All intellectual property rights such as trademarks, service marks, trade names, designs and copyrights are reserved.

Nothing contained in this website may be reproduced without written permission. Rolex reserves the right at all times to modify the models featured in the present website.

