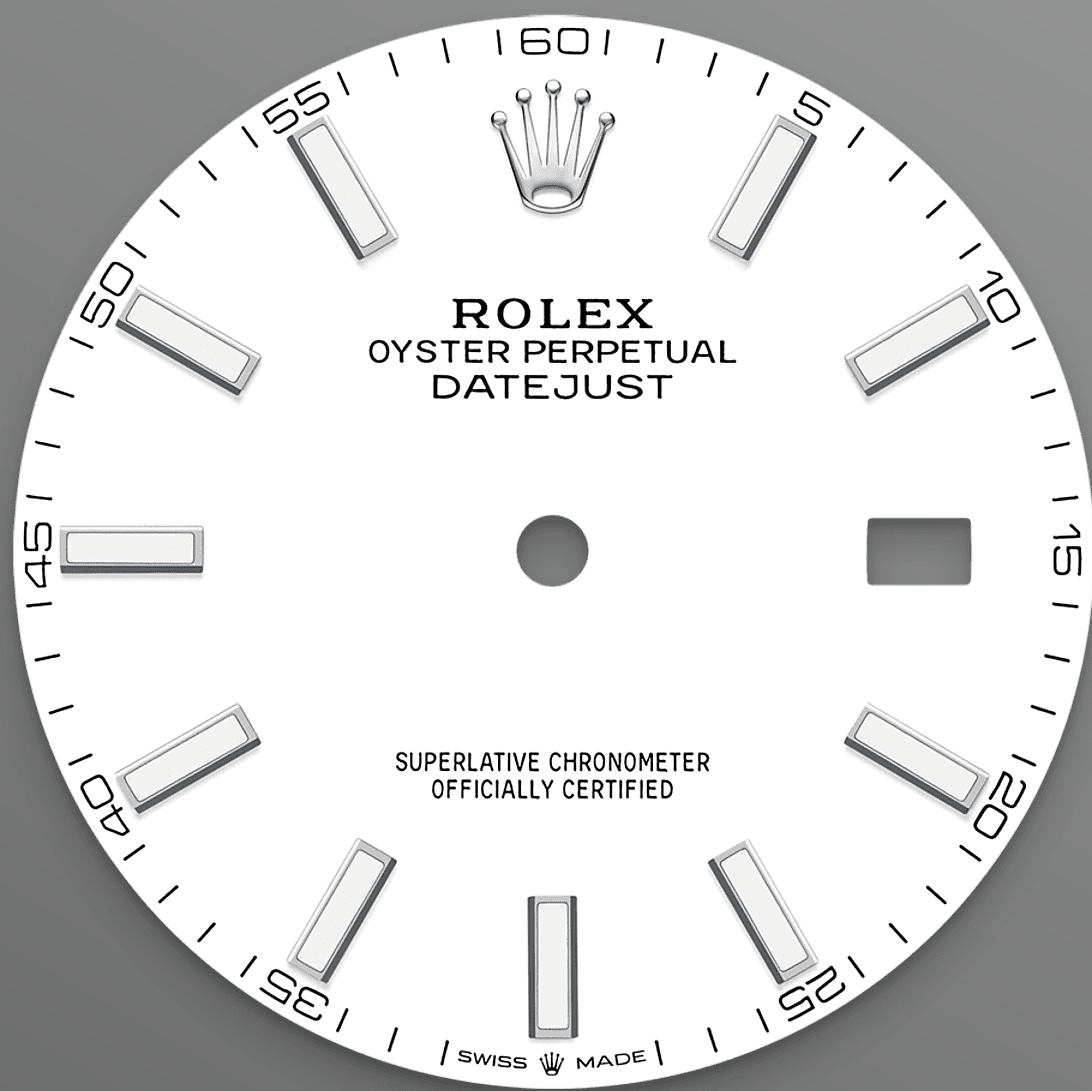




Datejust 41

Oyster, 41 mm, Oystersteel

**This Oyster Perpetual
Datejust 41 in
Oystersteel features a
white dial and an Oyster
bracelet.**



WHITE DIAL

Limitless freedom

Lacquer combines almost limitless freedom of colour with intensity and a smooth finish. The lacquering technique consists of successively depositing six thin layers of lacquer on a brass base plate.

A colourless varnish is then applied to give the colour or shade all of its depth and shine. Once the varnish is dry, the surface of the dial is polished to magnify the colour; the dial is then ready to be pad printed and receive its appliques.

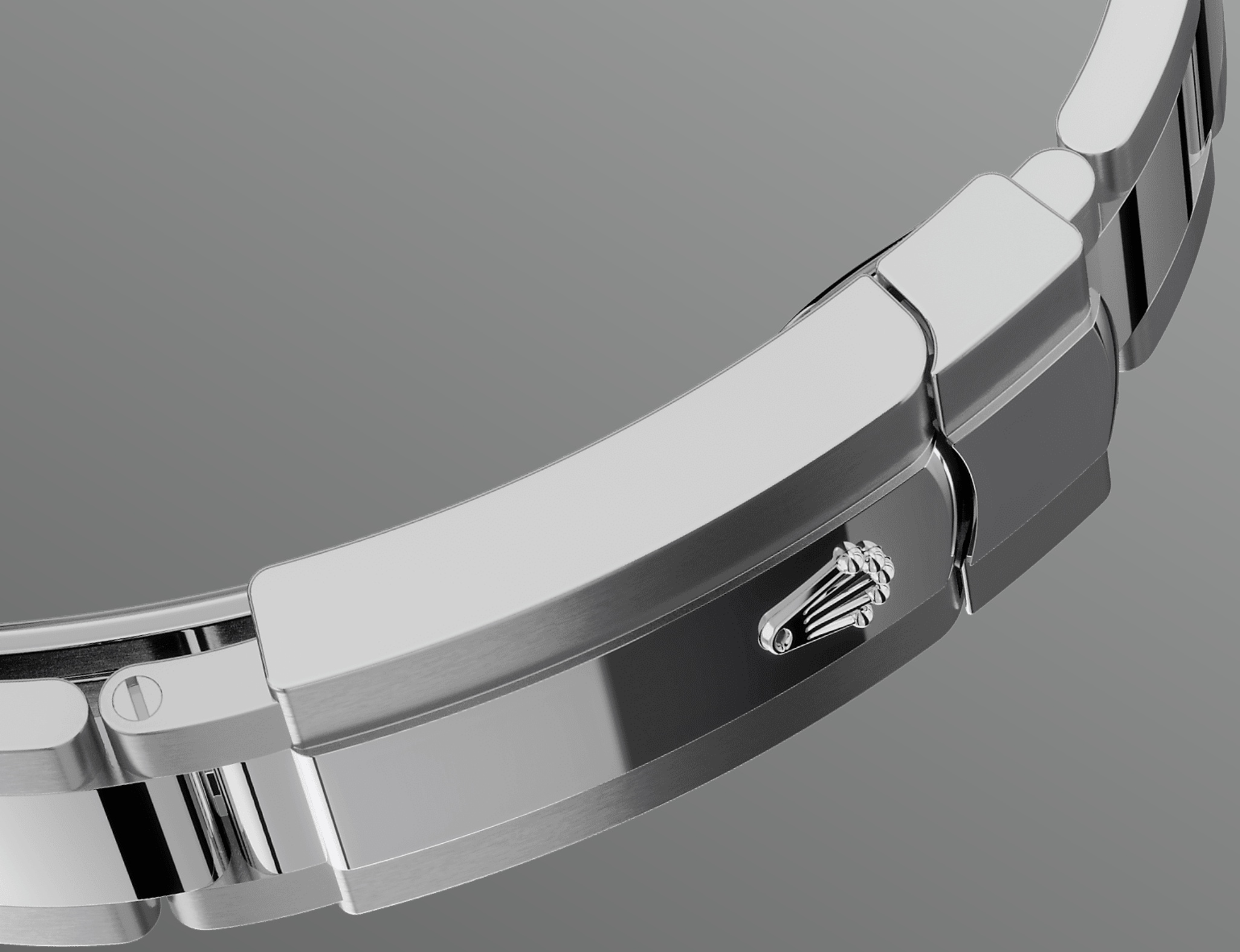


OYSTERSTEEL

Highly resistant to corrosion

Rolex uses Oystersteel for its steel watch cases. Specially developed by the brand, Oystersteel belongs to the 904L steel family, alloys most commonly used in high-technology and in the aerospace and chemical industries, where maximum resistance to corrosion is essential.

Oystersteel is extremely resistant, offers an exceptional finish once polished and maintains its beauty even in the harshest environments.



THE OYSTER BRACELET

Alchemy of form and function

The Oyster bracelet is a perfect alchemy of form and function, aesthetics and technology, designed to be both robust and comfortable.

It is equipped with an Oysterclasp and the Easylink comfort extension link, also exclusive to Rolex. This ingenious system allows the wearer to increase the bracelet length by approximately 5 mm, providing additional comfort in any circumstance.



THE CYCLOPS LENS

A magnifying lens

The Cyclops lens is one of the most distinctive Rolex features, and one of the most recognizable.

Named after the one-eyed giant of Greek mythology, the Cyclops lens magnifies the watch's emblematic date display for easy reading. Behind the Cyclops, as with every feature of a Rolex timepiece, lies a history of invention, research and development, and the endless search for perfection.

More Datejust technical details

Reference 126300

Model Case

Type

Oyster, 41 mm, Oystersteel

Diameter

41 mm

Material

Oystersteel

Bezel

Smooth

Oyster Architecture

Monobloc middle case, screw-down case back and winding crown

Winding Crown

Screw-down, Twinlock double waterproofness system

Crystal

Scratch-resistant sapphire, Cyclops lens over the date

Water Resistance

Waterproof to 100 metres / 330 feet

Movement

Type

Perpetual, mechanical, self-winding

Calibre

3235, Manufacture Rolex

Precision

-2/+2 sec/day, after casing

Oscillator

Paramagnetic blue Parachrom hairspring. High-performance Paraflex shock absorbers

Winding

Bidirectional self-winding via Perpetual rotor

Power reserve

Approximately 70 hours

Functions

Centre hour, minute and seconds hands. Instantaneous date with rapid setting. Stop-seconds for precise time setting

Bracelet

Type

Oyster, three-piece solid links

Clasp

Folding Oysterclasp with Easylink 5 mm comfort extension link

Bracelet Material

Oystersteel

Dial

Type

White

Details

Highly legible Chromalight display with long-lasting blue luminescence

Certification

Type

Superlative Chronometer (COSC + Rolex certification after casing)

Explore and discover more on Rolex.com

All intellectual property rights such as trademarks, service marks, trade names, designs and copyrights are reserved.

Nothing contained in this website may be reproduced without written permission. Rolex reserves the right at all times to modify the models featured in the present website.

